

## Binocular Palm Vein Scanner model SF203



## Product Description

It is the new multi-angle anti-exposure palm vein recognition terminal of SFT. The product adopts a high performance lens FEL:3.2mm F/NO:2.4 to deal with the impact of backlight environment on the speed of palm recognition. Scanning speed 0.1s can quickly detect the palm of the hand in a short period of time. The product supports a variety of systems Windows/Linux/Android, can be used with rk3568, rk3288 and other Android motherboards, provide a complete set of dome and development files to make independent development time is greatly reduced. Palm vein module has a wide range of applications, it can be used in the access control system of community, industrial park, office building, as well as library lending and returning machines, access gates of underground and bus, security check channel of airport and railway station, etc. It can also be applied in the canteen consumption payment, lift control and other scenes, which provides reliable technical support for personnel management, security control and convenient payment.

In terms of security performance, palm vein recognition, as a highly secure biometric technology, is unique and difficult to replicate. This module takes advantage of the fact that each person's palm vein pattern is unique and located inside the skin, making it difficult to be stolen or forged, providing customers with reliable security against unauthorised access and intrusion. At the same time, the module is equipped with a live body detection function, which can effectively defend against fake attacks such as pictures and mobile phone screens.

## Product Advantages



Non contact, module able to recognize palm vein at a distance of 5cm-20cm;



Adopt embedded palm vein chip, support a variety of development



Size: 45mm X29mm x10mm;



Windows,Android,Linux;



Highly accurate recognition, 99.5% certainty in monocular liveness detection;



Support palm vein recognition, Multi-angle acquisition recognition method;

## Parameters

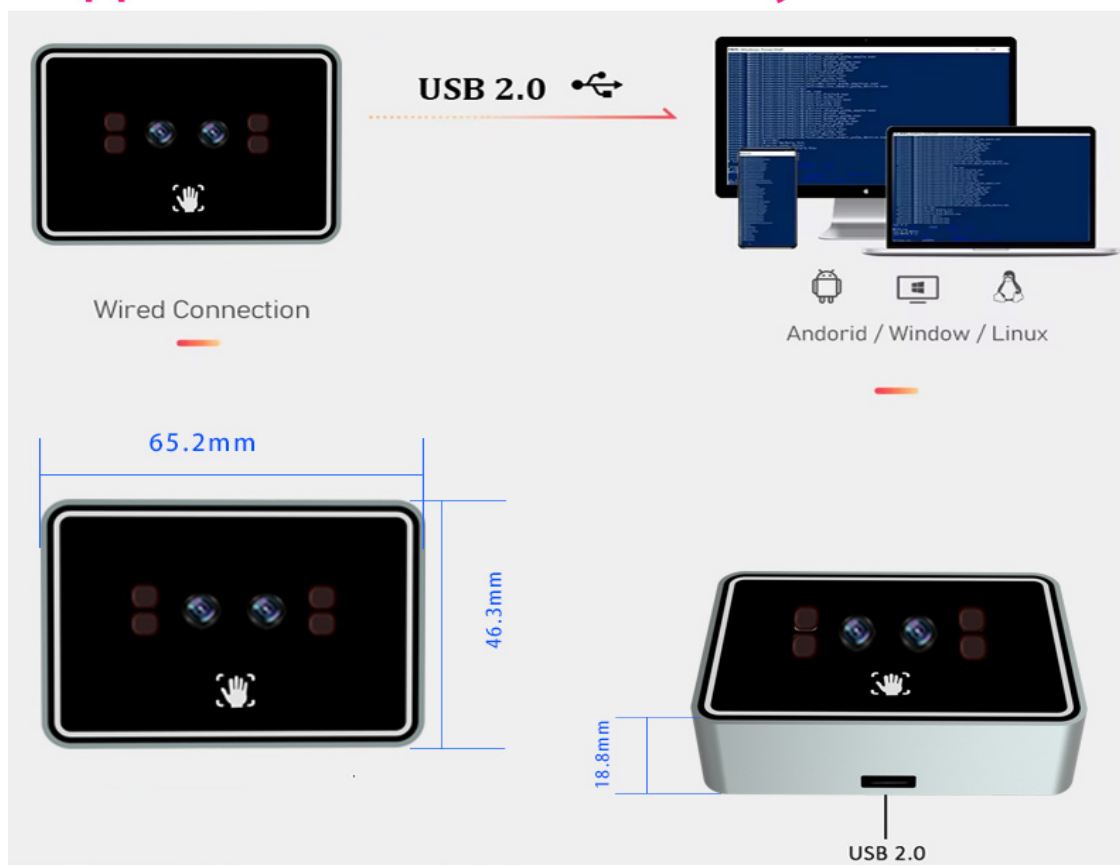
### Model No.

**SF203**

Size	55*16*10 mm/80*16*10mm
Resolution	1920 H x 1080 V
Pixel size	3.0*3.0 $\mu$ m
Dynamic Range	105dB
Output format	MJPEG, YUV2
Field of view	D: 73° H:65° V: 39°
Lens	FEL:4.3 mm F/NO:2.0
Scanning speed	0.1S
Focus type	FF/ MF
Shutter type	Electronic Rolling shutter
Palm vein capacity	10000
Interface	5 PIN 1.25MM Socket
Minimum illumination	0.01Lux@(F1.2,AGC ON)
Support system	Windows, Android, Linux, Wince, Mac OS
Operating voltage	USB DC +5V
Operating current	<200mA
Operating temperature	-20°C ~ 60°C
Storage temperature	-20°C ~ 85°C
Cable length	TBD

Supported system	Windows/Linux/Android
Angle of use	360° recognition
Palm vein capacity	10000
Reject rate	<0.01%
Recognition rate	<0.00001%
Authentication speed	1:N<1s
Comparison mode	1:1    1: N
Recognition distance	5-20cm
Light processing	anti-exposure
Recognition screen	Supports colour - black and white picture
Recognition method	Support face recognition and palm vein recognition

## Support connection to various system devices



Supported Resolution and Frame Rate

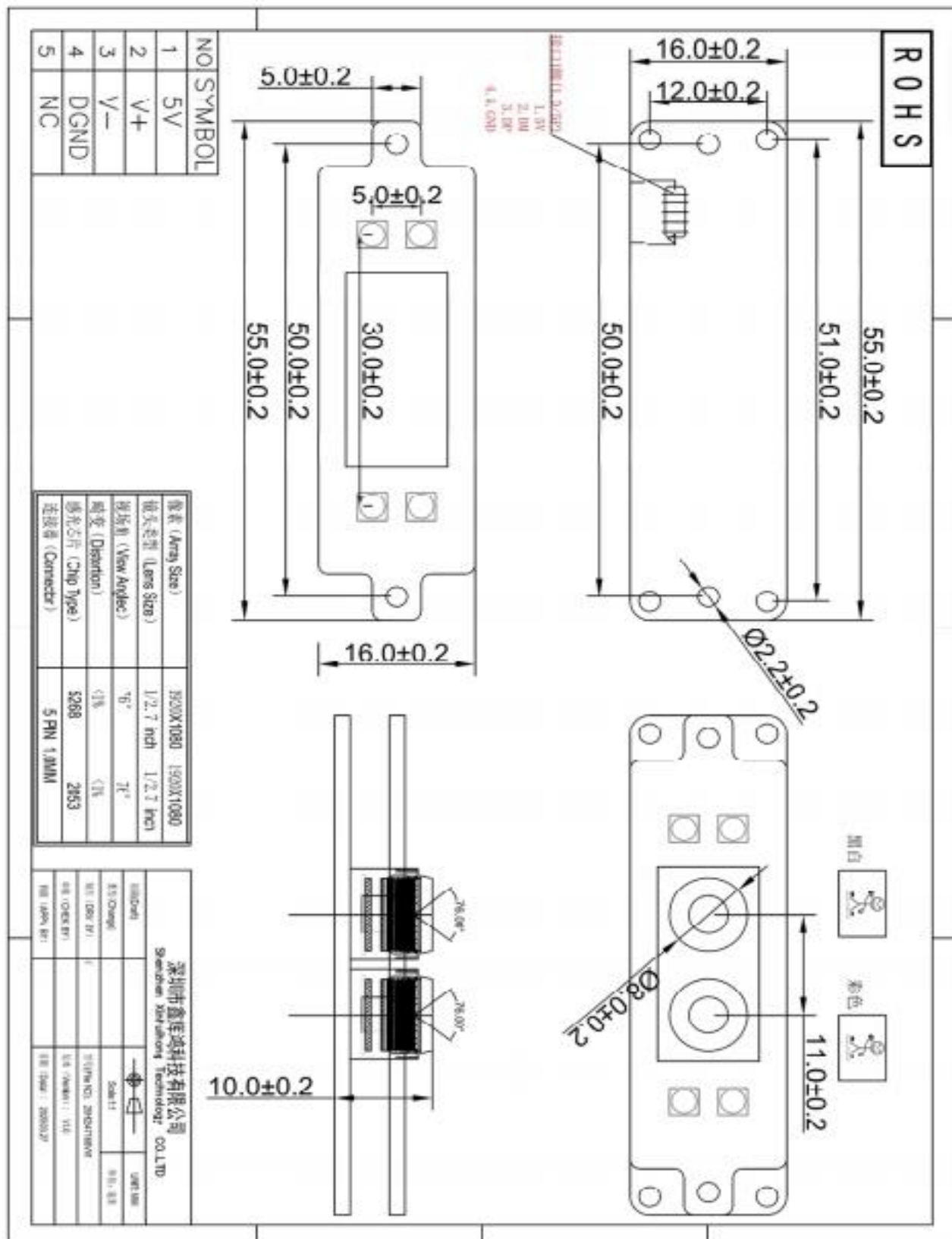
Format	Resolution	Frame Rate (USB2.0)
MJPEG	1920x1080 (1080P)	30FPS
	1280x720	30FPS
	1024x768	30FPS
	800x600	30FPS
	720x544	30FPS
	640x480	30FPS
YUY2	1920x1080 (1080P)	5FPS
	1280x720	5FPS
	1024x768	10FPS
	800x600	10FPS
	720x544	10FPS
	640x480	30FPS



PIN Definition

Pin No.	Signal Name	Description
1	VCC	5V Power
2	DM	USB2.0 Data+
3	DP	USB2.0 Data-
4	GND	GND
5	GND	GND

### Shape and Dimensions (Unit: mm)



# Applications

## Access Control



## Gates

